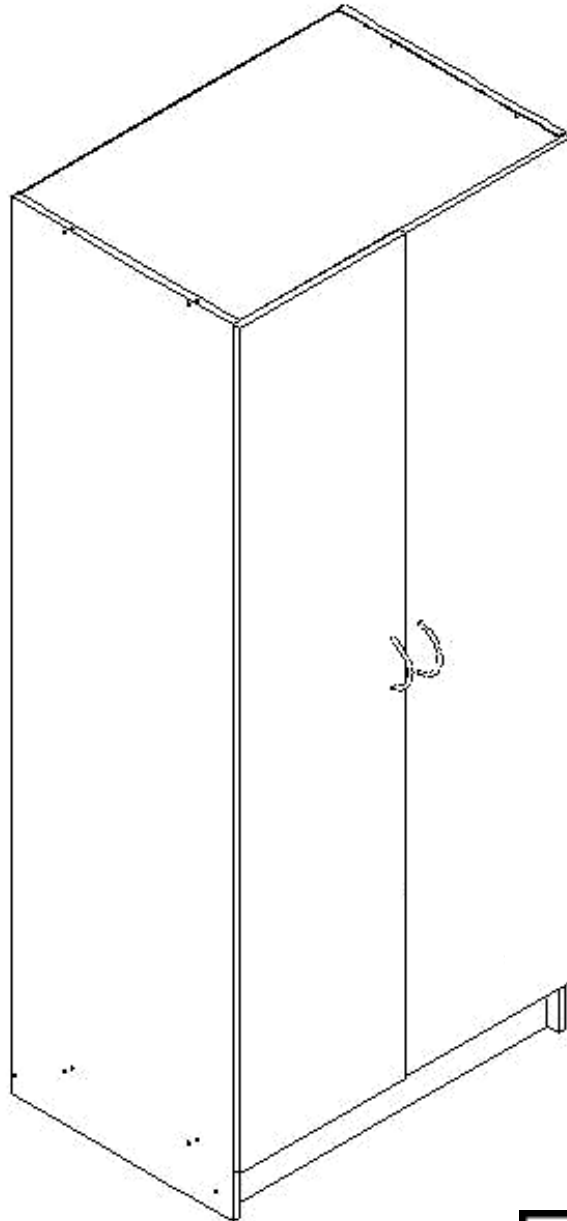


Assembly Instructions

Ryan

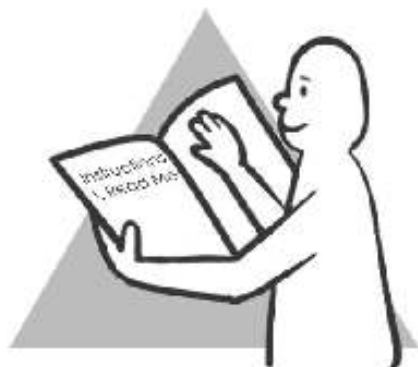
2 Door Robe 800mm - Oak



WARNING

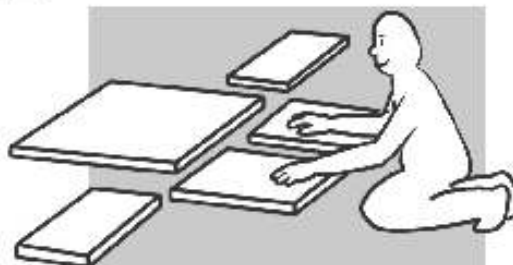
FAILURE TO FOLLOW THESE BASIC STEPS CAN LEAD TO DAMAGE THAT IS NOT COVERED BY YOUR WARRANTY

1



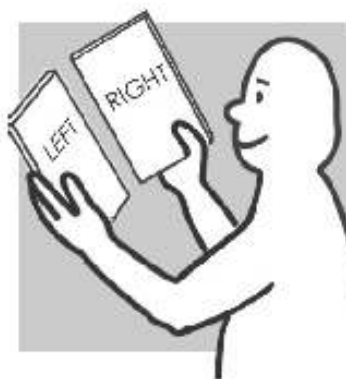
Read instructions carefully. Check no parts are missing.

2



Lay out all of the components on a soft surface as if you were preparing to do a jigsaw puzzle.

3



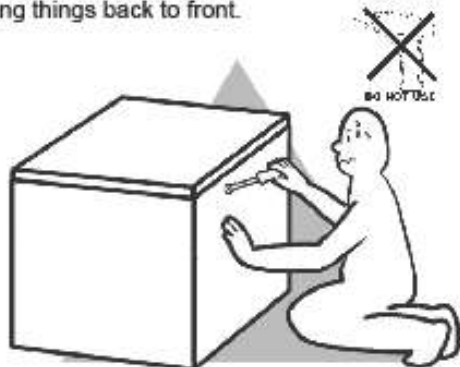
Carefully identify each component, especially those that are similar. The most common mistake is getting things back to front.

4



Separate and identify each component from the hardware pack and rest each one in its proper location before fastening.

5



DO NOT fully tighten screws (leave slightly loose). When the item is fully assembled tighten the screws - but do not over tighten.

6

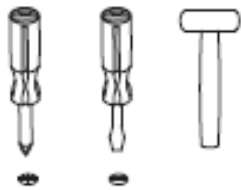


If glue is required **DO NOT** set until you are certain that the parts belong together.

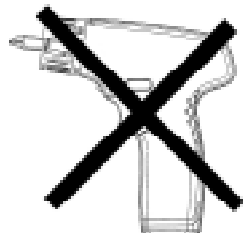
Page 2

It is recommended the wardrobe is assembled in the room that it is intended for.
(CLEAR FLOOR SPACE IN ROOM IF REQUIRED)

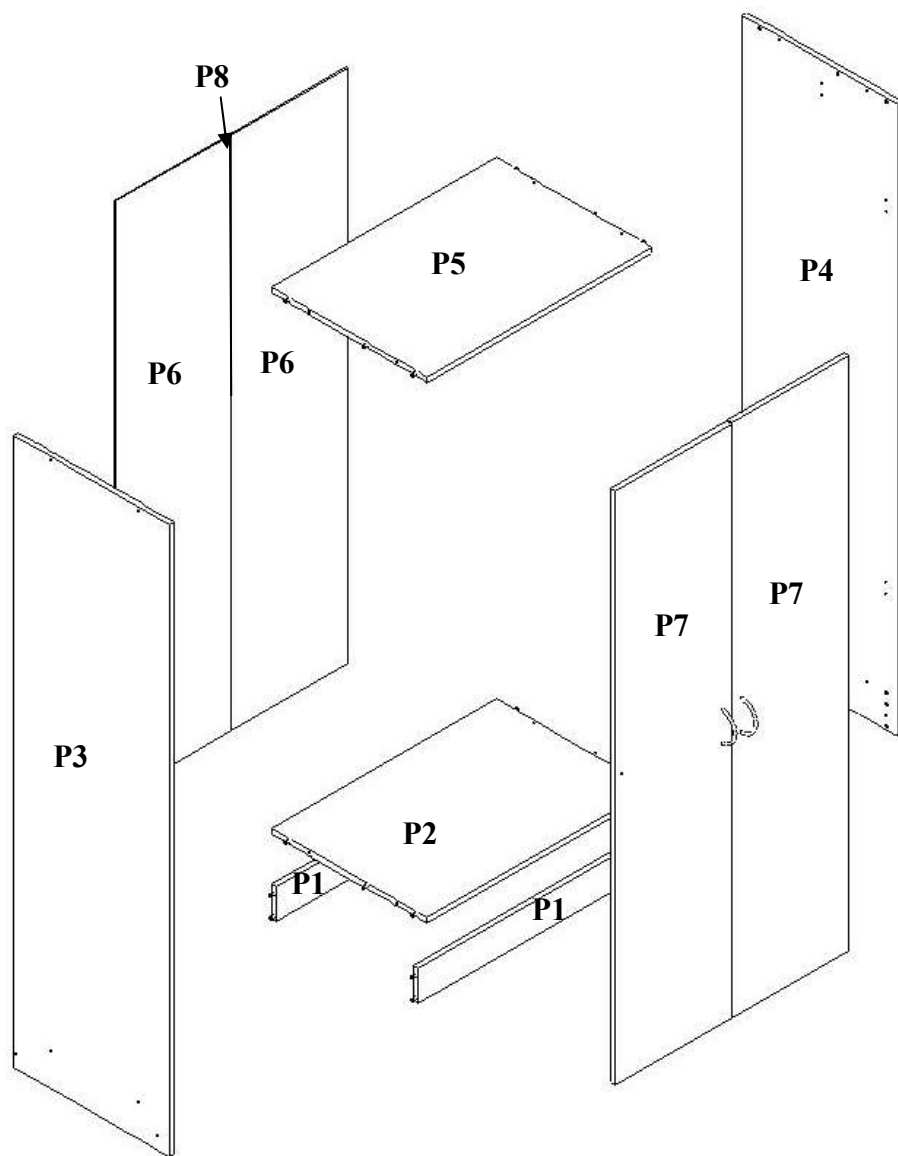
What You Need



(tools not provided)
 Phillips Head Screwdriver
 Flat Head Screwdriver
 Hammer



DO NOT USE



50 x NAILS
(H1)



1 x HANGING RAIL
(H2)



2 x HANGING RAIL BRACKETS
(H3)



12 x CONFIRMAT SCREWS
(H4)



12 x CONFIRMAT SCREW CAPS
(H5)



10 x 1/2 6g C/S SCREWS
(H6)



4 x HANDLE SCREWS
(H11)



2 x BOW HANDLES
(H7)



4 x HINGE & HINGE BLOCK
(H8)



4 x PLASTIC GLIDES
(H9)



1 x 28MM NIB SCREW
(H12)

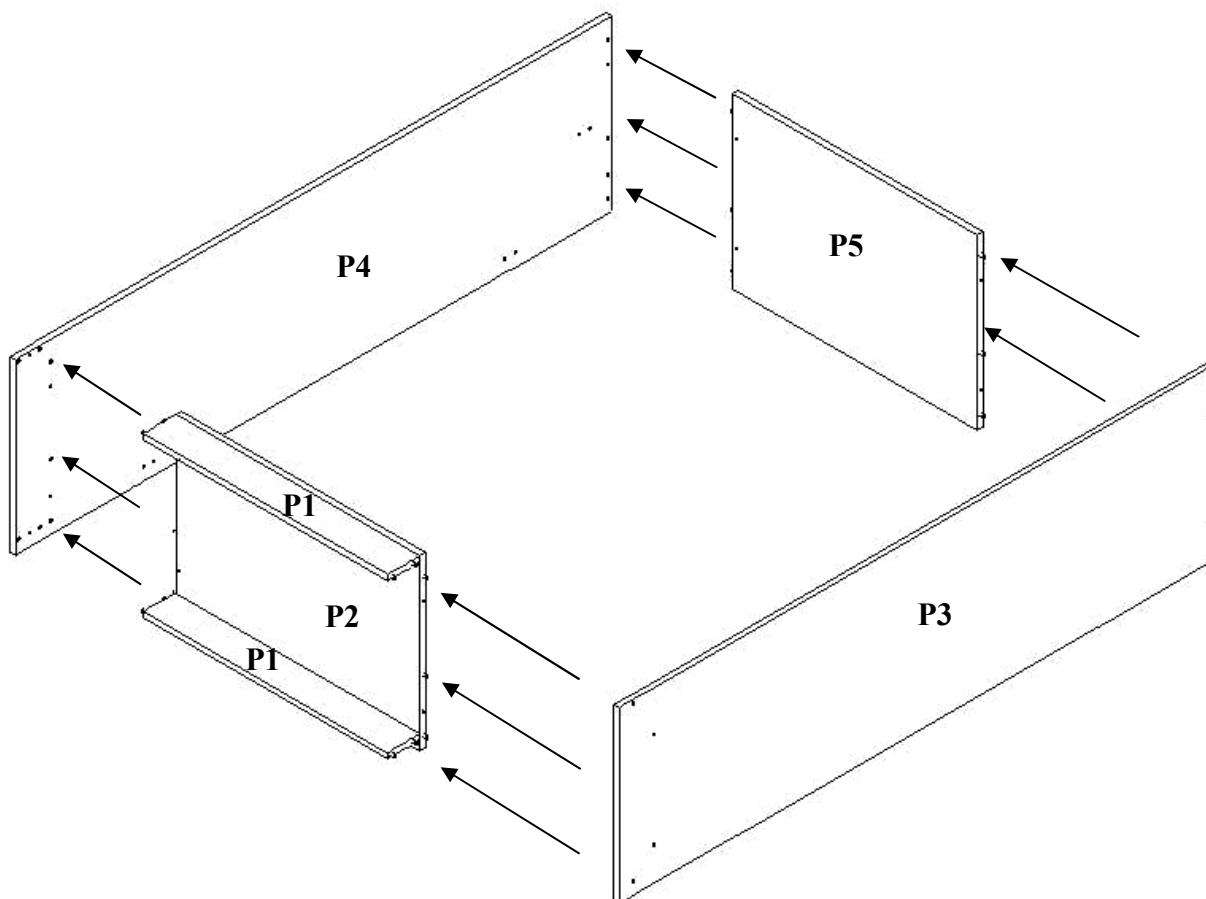


1 x WALL FIXING BRACKET
(H10)

STEP 1



Note:
All raw edges should be facing up and Oak edges facing down in this stage of assembling



- 1 Align dowels on P2 with holes on P4 and bring together.
- 2 Align dowels on P5 with holes on P4 and bring together.
- 3 Align dowels on P1 with holes on P4 and bring together.
- 4 Align holes on P3 with the dowels on P1, P2 & P5 and bring together

STEP 2

You will need:

12 x Confirmat Screws (H4)

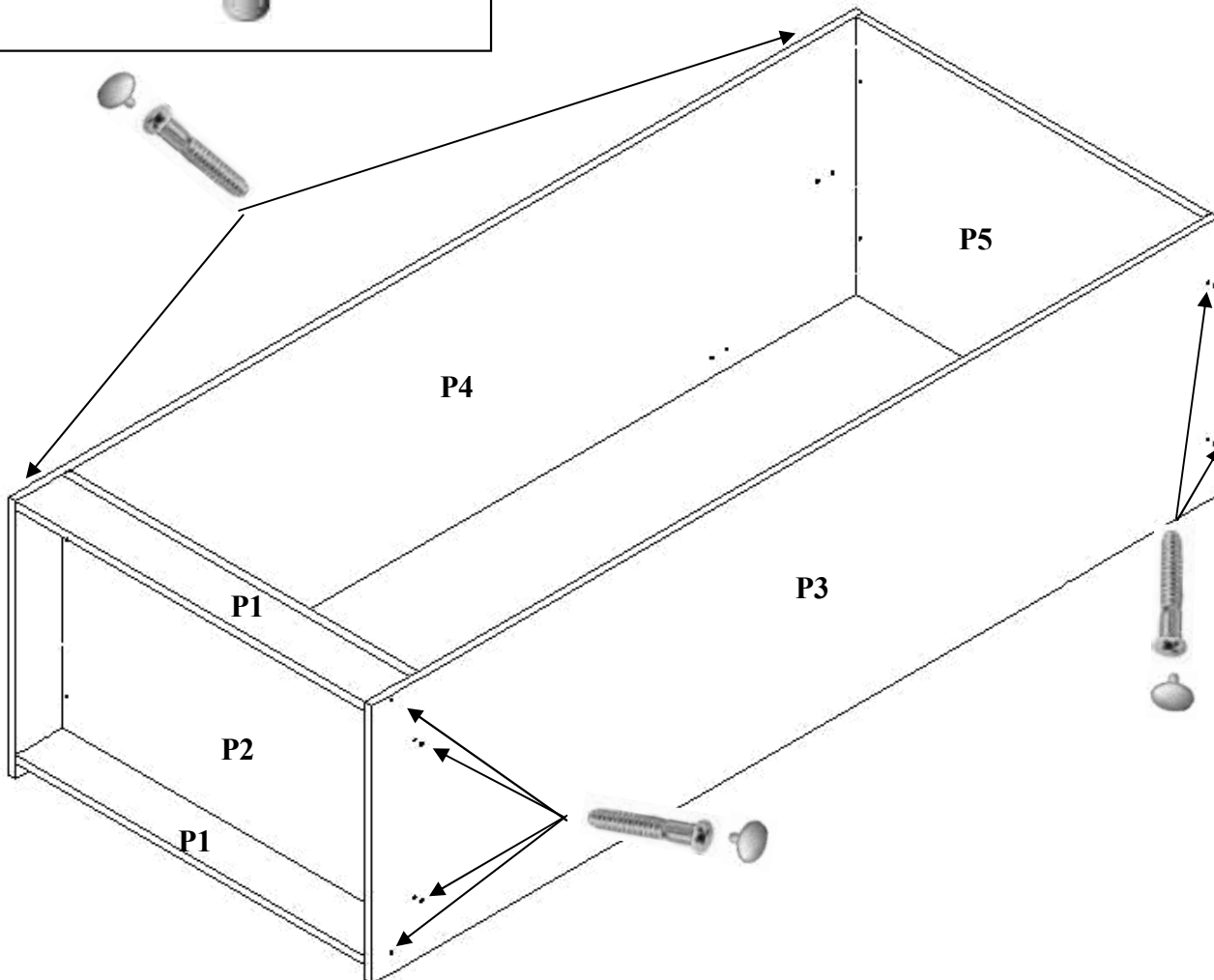


12 x Confirmat screw Caps (H5)



Note:

All raw edges should be facing up and Oak edges facing down in this stage of assembling



- 1 Using Confirmat screws (H4) fix panels P3 & P4 in place through P1, P2 & P5 using the holes provided.
- 2 Insert end caps (H5) into the screws on side panels.

STEP 3

You will need:

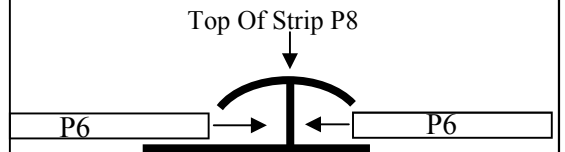
50 x nails (H1)



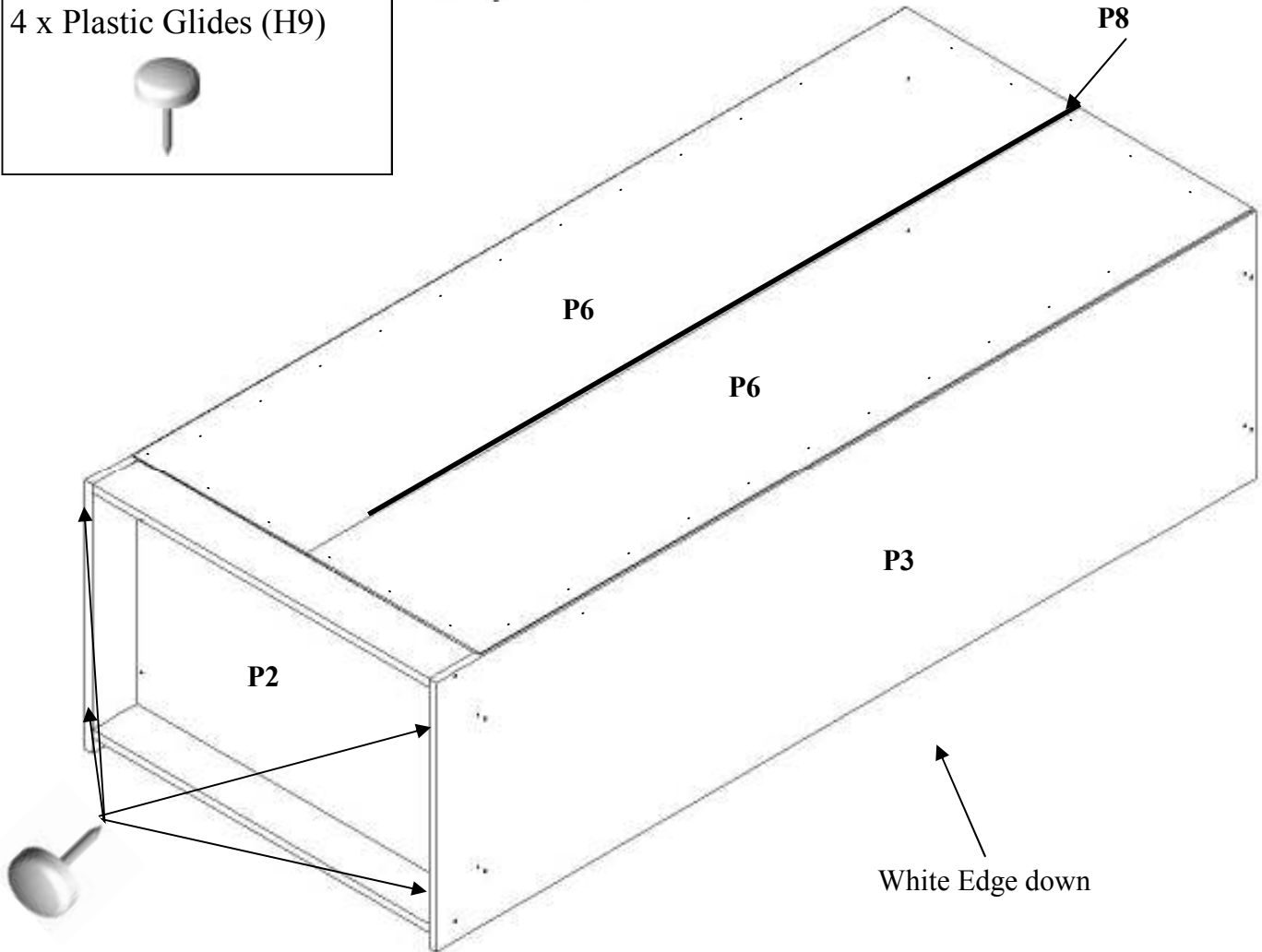
4 x Plastic Glides (H9)



Profile view of connector strip of backs P6



Note: Top of strip (P8) to be facing upwards when placing it on unit



- 1 Ensure the unit is on it's front, raw edge up, oak edge facing down
- 2 Join the 2 back panels (P6) with the connect strip (P8) as shown above then place over the opening.
- 3 Make sure the unit is square by placing a back panel in corner and aligning the edges of wardrobe.
- 4 Nail in each corner of back panels P6 and work along the unit, making sure to hammer in the nails close to the edge so the nail penetrates the unit.
- 5 Gently hammer in Plastic glides to bottom edges of wardrobe.

STEP 4

You will need:

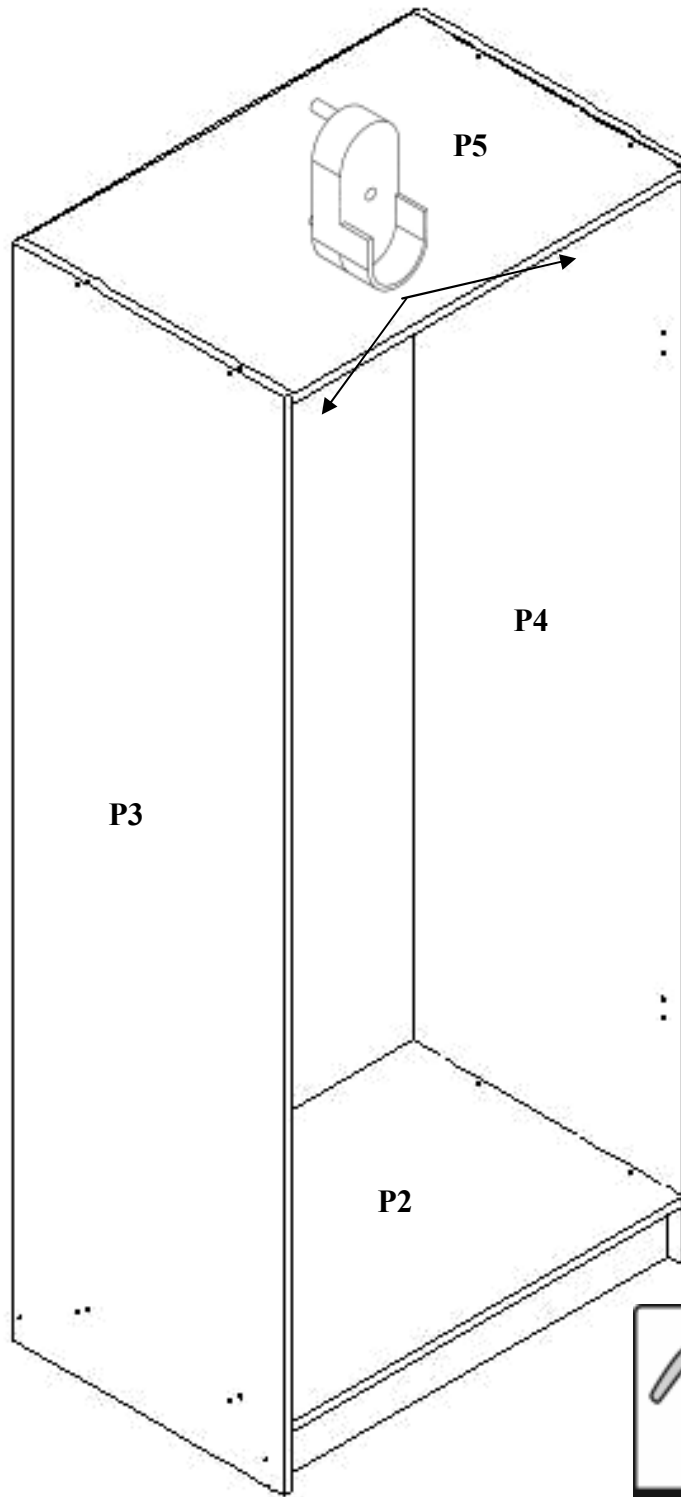
2 x Hanging Rail Brackets(H3)



4 x Hinge Block (H8)

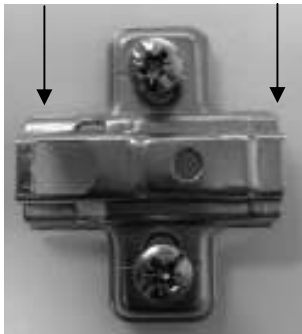


2 x 1/2 6G C/S Screw (H9)



**FACING
REAR OF
UNIT**

**FACING
FRONT
OF UNIT**



When attaching the hinge block (H8) ensure that it is positioned as shown above.



1. Stand unit upright.
3. Fix 4 hinge blocks (H8) to parts P3 & P4 into the guide holes using the screws provided on the hinge block, making sure the Hinge Block (H8) is facing the right way. (see above picture)
4. Attach Hanging Rail Brackets (H3) into holes provided in P4 & P3 and fix to unit using 2 x 1/2 6g C/S Screws (H6). Simply place the Hanging rail (H2) Into brackets.

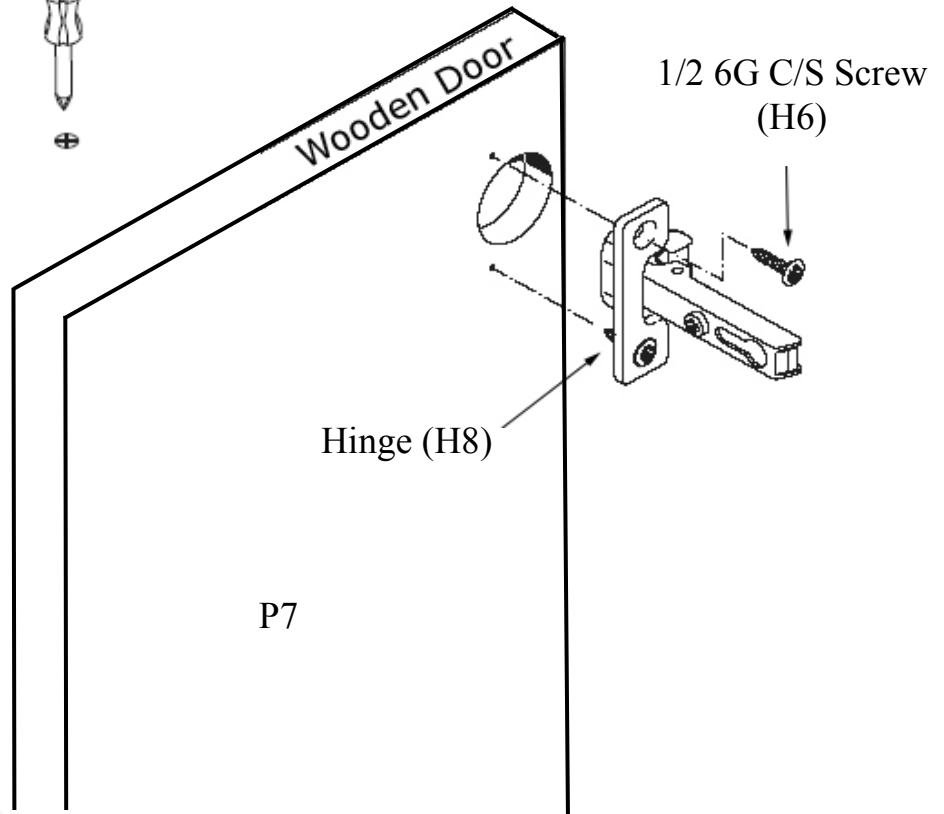
STEP 5

You will need:

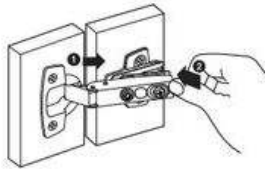
4 x Hinge (H8)



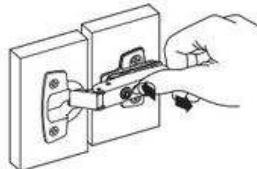
8 x 1/2 6G C/S Screw (H6)



Mounting Door to Cabinet



Installation



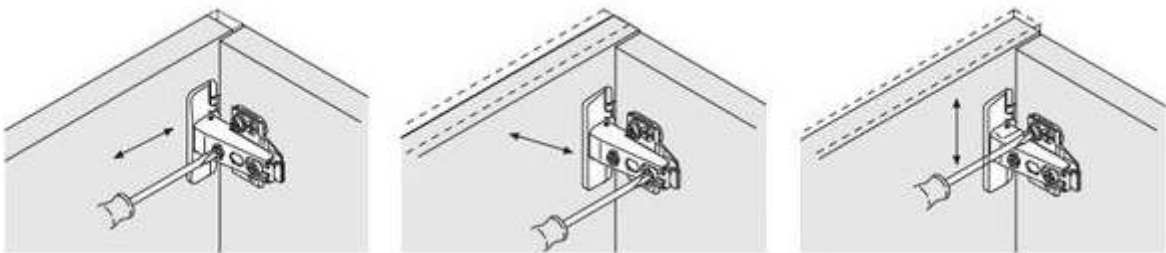
Removing

Snap-On System

The hinge arm is positioned on the mounting plate and simply clipped on from front to back.

It can easily be removed from the mounting plate by pressing the back end of the hinge arm which will release it from the block

Adjustment of Doors (More information on page 10)



1. Attach hinge (H8) to all doors P7 using the 8 x 1/2 6G C/S Screw (H6) using the pilot holes as shown in picture above.
2. Working from the top down, Position the Hinge (H8) and the Hinge Block (H8) together from the front of the Hinge Block first then simply click together.

STEP 6

You will need:

2 x Bow Handle (H7)



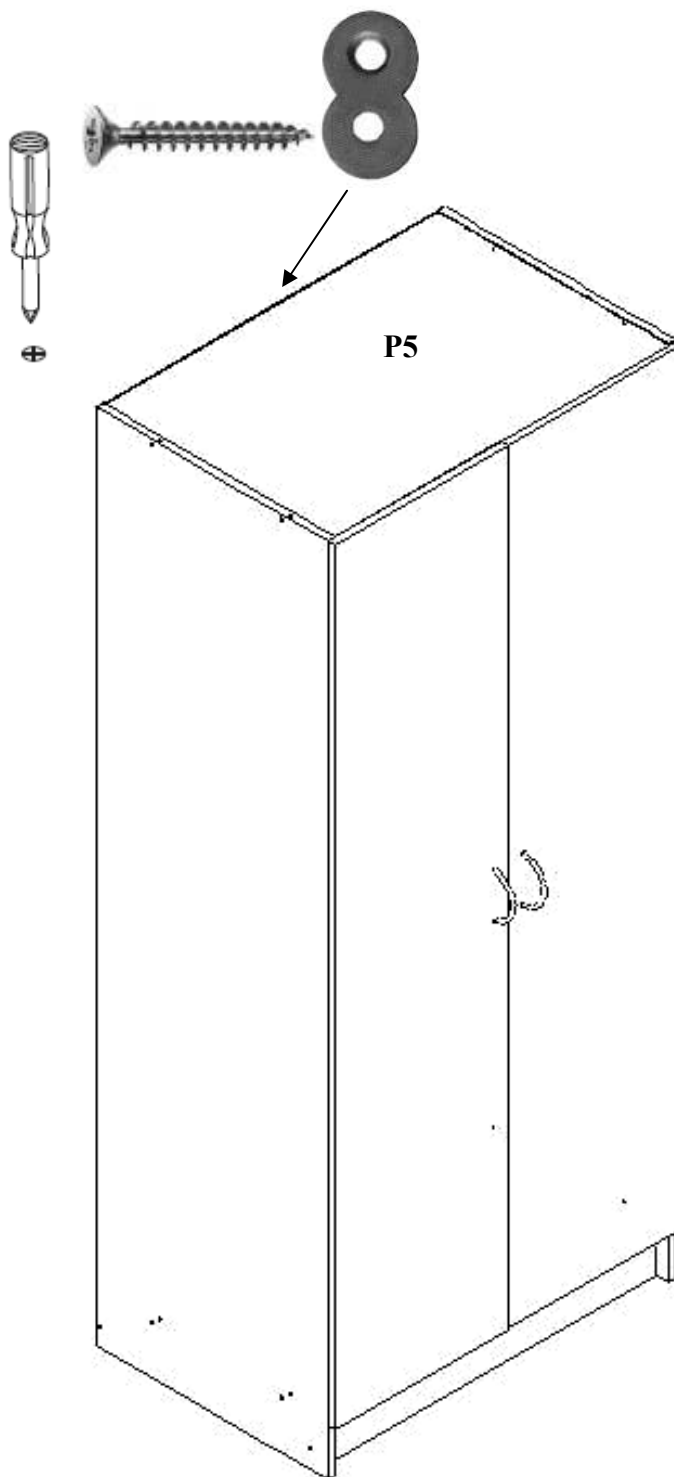
4 x Handle Screw (H11)



1 x Wall Fixing Bracket (H10)



1 x 28mm Nib Screw (H12)



- 1 To fit handles, place handles (H7) on the front of the door and use Handle Screw (H11) to fix handle to the door from the inside of the unit.
- 2 We recommend the unit to be fixed to the wall, to do this you can use the Wall Fixing Bracket (H10). Attach the Wall Fixing Bracket with the 28mm Nib Screw (H12) through the bottom hole of the Wall Fixing Bracket (H10) to the back of the unit along the top edge of Part (P5) so it aligns with the wall.

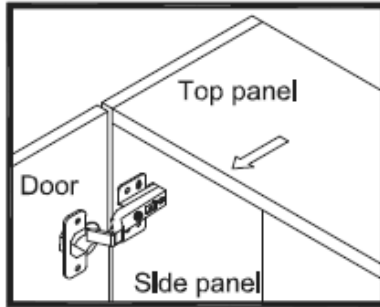
Consult your hardware specialist for which fastener is recommended for your wall

STEP 7

TO ADJUST YOUR DOORS TO MAKE THE GAPS MORE EVEN (OPTIONAL).

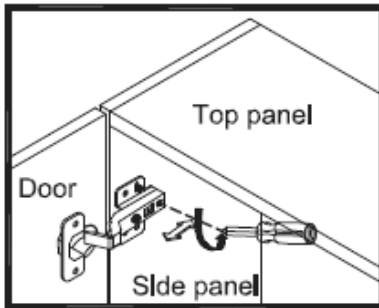
STEP 1

Open the door.



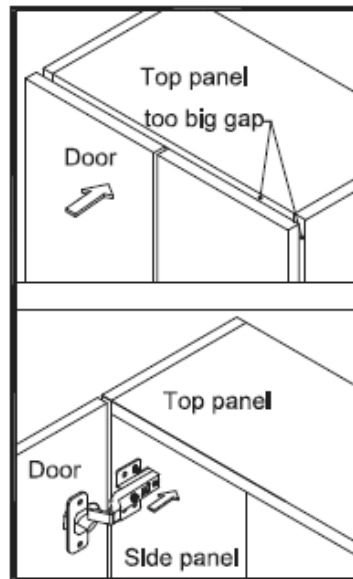
STEP 2

Adjust the gap between door panel and side panel



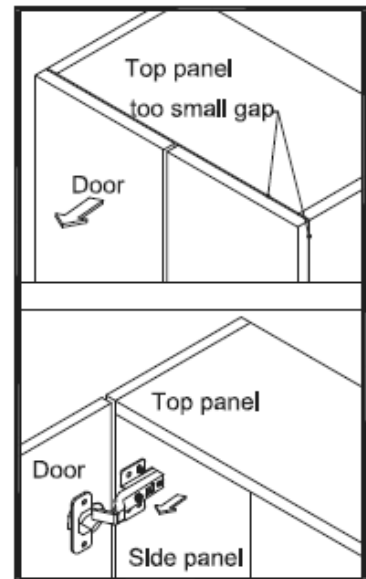
Loosen the screw indicated a little, adjust the hinge to right position (see step 2a & 2b), then tighten the screw.

STEP 2a MOVE DOOR IN



Push the hinge back a little.

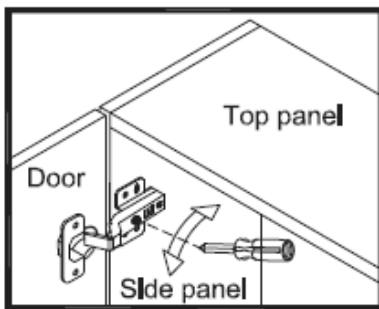
STEP 2b MOVE DOOR OUT



Pull the hinge forward a little.

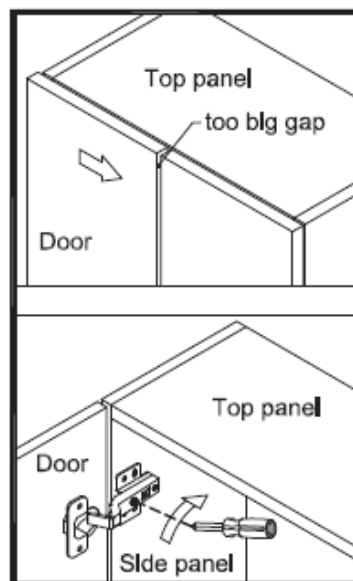
STEP 3

To adjust the gap between two door



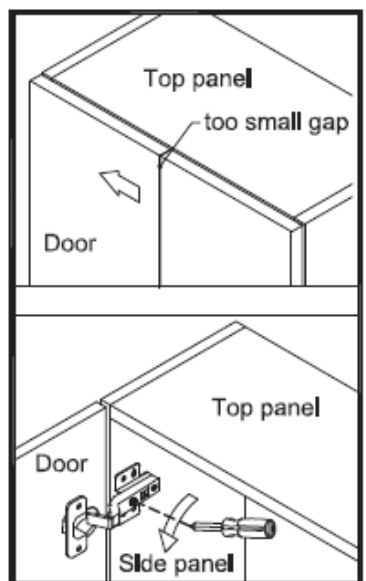
Loosen or tighten the screw indicated a little to adjust the gap between doors panels (see step 3a & step 3b)

STEP 3a MOVE DOOR RIGHT

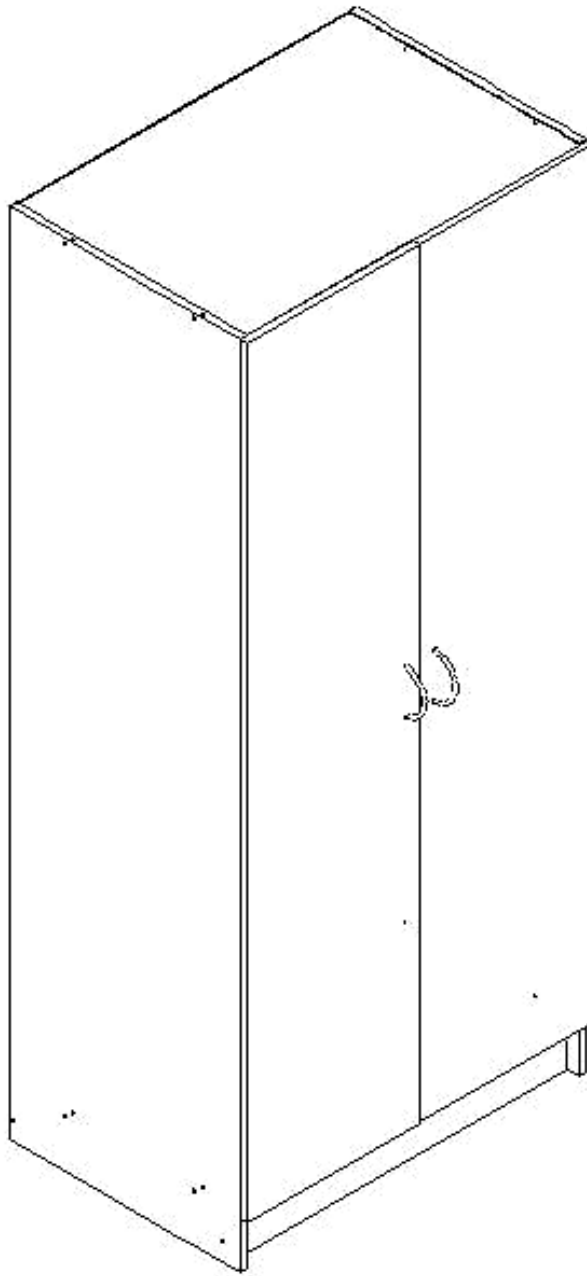


Turn the screw clockwise a little as shown to make the gap small.

STEP 3b MOVE DOOR LEFT



Turn the screw counterclockwise a little as shown to make the gap big.



YOUR UNIT IS NOW COMPLETE

In the interest of our environment
Please dispose of all packaging thoughtfully.



CAUTION

We recommend all units to be screwed to the wall .
Consult your hardware specialist for which fastener is recommended.